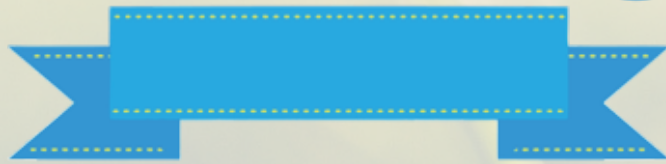


~ Bringing Together Rural Young Adults ~

EMERGE



YOUNG ADULTS
—WEEKEND—

Welcome...

We've been running an event called Intents for young people where they gather together for a weekend of connecting with God that is really natural and with a family atmosphere. Its become quite well known and I loved the idea of doing something for young adults that had a similar vibe but with themes that suited our age group.

There is a café/bar, beautiful countryside, quiz, campfire and an opportunity to come together for worship, teaching and getting to know new people. In this little booklet you should find everything you need to know for the weekend, and if you've got any further questions you can just ask me.

Enjoy your time,

Adam Jackson
Emerge

Food: Breakfast bits are provided, and lunch is available in the Cafe area. The BBQ will be available on Saturday evening if you want to grill-your-own. Self Catering is welcome or there is a Fish and Chip shop in Mattishall.

Children: We want to try and provide provision for parents of young children and will have an area next to the main meeting room during the evening sessions.

Dogs: We recommend not bringing dogs as the farm dog (Megan) loves people but not other dogs.

Litter: Its super important to remove all litter from the farm. Please use bins correctly (**B**lack is **B**ad Landfill and **G**reen is **G**ood Recycling!) or take home waste where you can.

Camping: You are very welcome to camp or come and go each day as you wish for the same ticket price. Doors open for tents at Midday on the 2nd Sept and please back down on evening of the 4th Sept.

Toilets: There is an indoor toilet in the barn (off limits evening meetings), a portaloo and the eco composting toilets down with the round house.



Directions...

All the best things in life are hard to find;
Emerge Young Adults Weekend is no different...

**Brandon House Farm,
Brandon Parva,
Norwich,
Norfolk
NR9 4DJ**

Or if you are super nerdy:
N 52.03765, W 0.95503

By car:

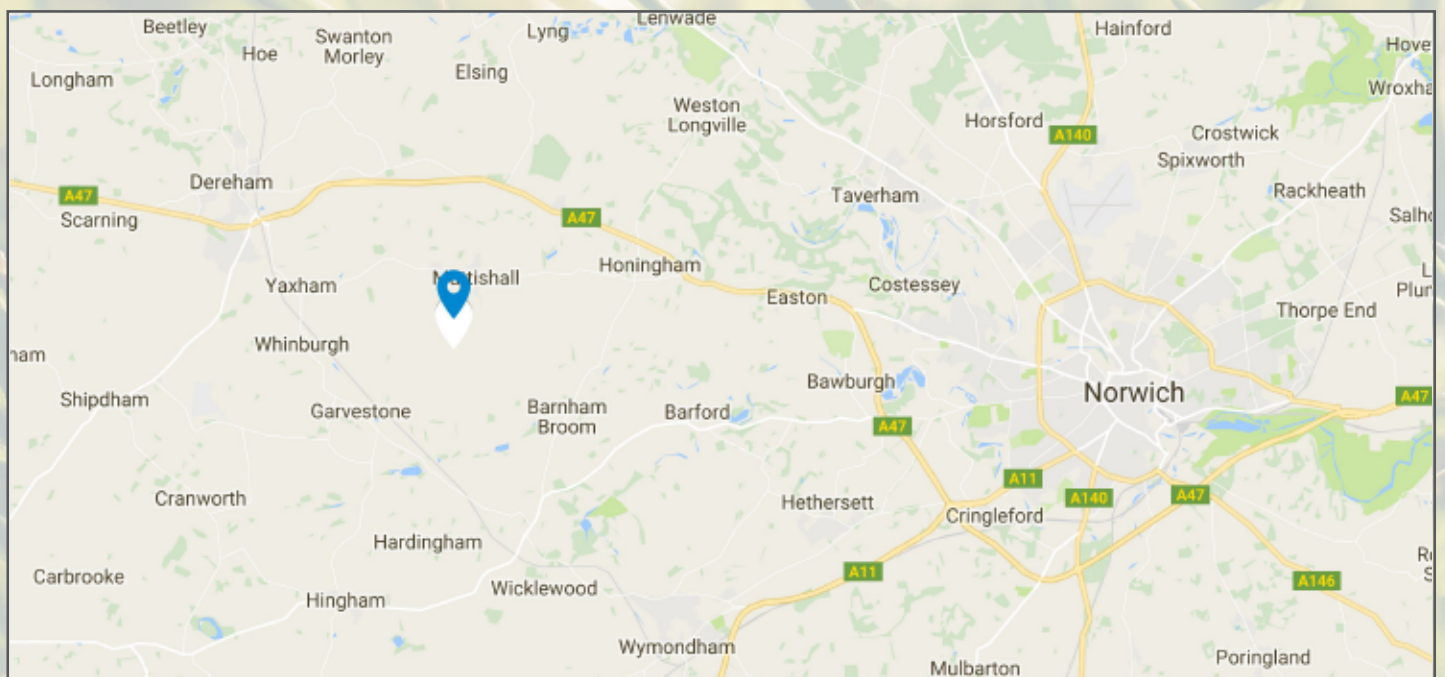
If you can find Mattishall, you're almost there. The village of Mattishall is just off the A47, about 10 miles out of Norwich, and is signposted at the exit you'll need. Once you're in Mattishall, you need to take the turning by the Church (or by the chip shop, depending on your worldview) going south (this is left coming from Norwich). Keep on going until you come to a T junction, turn right and it's the first place on the left! You're there!

By train:

The nearest station is Wymondham (pronounced 'Windum'), but only head there if you have arranged to be picked up beforehand (try the Facebook Page). If you're getting the train to Norwich your best bet is to do the rest...

By bus:

Konect 4 buses go direct from Norwich bus station to Mattishall. You can walk from there to the farm in 20 minutes.



Evening Meetings:

Friday



Jess Regnart works for Freedom In Christ Ministries equipping church leaders to disciple teenagers and adults. Having grown up in an atheist household she knows first-hand how hard it is to live without knowing God. After a Damascus road conversion in her early twenties she fell head over heels for Jesus and went on to complete a theology degree before going into full time ministry. Jess has a huge passion to help people encounter Jesus and step into their true identity and mandate. She also has a huge shoe collection, loves long-boarding and loathes bananas.

Saturday

TBC

Sunday



Colin Howell is a nationally significant artist working with the British foreign office and other government departments to create official documents that are both beautiful and impossible to forge. (Look at page 30 of your passport – Colin both drew and ate that salmon). This gives him a unique insight into the promises of God and the spiritual battles we face where counterfeit and truth are so important. Colin is also a key leader in the Soul Church plant at Cromer in Norfolk.

Worship



Rebecca Wilkinson is leading worship over the weekend at the main sessions each evening. Rebecca is part of the worship leadership team at the folChurch in Mid Norfolk as well as at New Wine festival, The Father Heart conference and Intents. Rebecca is a phenomenal musician with experience of growing in leading worship in church from an early age. Leading her first worship set in a church of 200 at aged just 14. Her musical style is folky, fun and genuine.

Saturday Morning Seminars

Stephen Mawditt is the director of the Fountain Network, an organisation that gathers together organisations and individuals with a shared vision and values with the aim of equipping and empowering a movement of God in the region. Stephen has been on the leadership team a thriving charismatic church in Mid Norfolk for nearly two decades.

“

Power and Life After the Ascension:

A look at the concept of supernatural power in the old testament and looking at how the concept changes after the Ascension of Jesus and receiving the Holy Spirit. Unpacking what the Bible says about this and then looking at how we live a life naturally supernatural.

”

Joey Graver is a pioneer of DNA in the region, an organisation that provides infrastructure for the local church to provide effective discipleship training for people to serve and grow. Joey is passionate about seeing people released into who God made them to be.

“

Owning Our Faith

Have you ever asked “Why is there nothing at church for me?”. Joey will be looking at looking at aspects of self leadership and leading in your world. Asking ourselves the question of ‘am I a leader?’ and what do I do with that?

Ultimately ending with exploring the idea of what legacy do I want to leave on this world?

”

Saturday Afternoon Seminars

Jill Gower heads up Norwich House of Prayer, part of a networked movement of people around the country who pray together for the nation, the organisation often unpacks prophetic and spiritually significant events in the news to be able to provide deeper insight for intercession. Jill is a fantastic teacher with a real heart for the Hebrew roots of the Bible, and is renowned for her capacity to uncover and set the scene of our modern Christian faith in its ancient Hebrew context.

Jesus the Jewish Messiah

Jesus was Jewish. He was born to a Jewish dynasty, in a Jewish nation and worshipped in the Jewish temple, yet today we so often miss out on the significance and richness of this context in our Bible study. Jill will be taking a journey through the old testament looking at how the wealth of prophecies and expectation among the people of Israel from the very start shows us a whole new world of who Jesus is and his significance as the saving messiah of the Jewish people.

David Ward, recently returned from living with his wife and two sons amongst the people in a favela in Brazil with drug dealers, gang violence and poisonous spiders a daily part of life, Dave has returned home to serve the Congregationalist Movement as their Eastern Areas Worker. This is a bit like a cross between a bishop and Paul the apostle! He travels around encouraging, equipping and helping Congregationalist churches serve Jesus the best they can.

Taking off the Mask – A Journey into Vulnerability

Dave looks at what it means to be honest with God, yourself and others about your struggles. We'll go on a journey towards openness and honesty in a safe environment with the aim of no longer having to hide behind our masks, pretending to be someone we're not and realising the power in living this out.

Sunday Morning Seminars

Phil Webb is a pastor and Bible teacher with over 40 years of experience. His passion is to simply encourage people to have a deeper love and understanding of God's Word. Phil lives in Lincolnshire and is married with three children and six grandchildren.

“

What's in a Word

Exploring ancient Hebrew and how seemingly simple Bible words such as “Worm” or “Wing” can have deeply significant meaning that can change the way we look at a verse.

”

Rachel Alexander is an ordained minister and leads with her husband Noel, the Prophetic Lighthouse, a place where people can meet together and just spend time soaking in God's presence. Rachel is renowned in this area for her prophetic insight and gentle and Jesus like spirit providing people with opportunities to hear the father heart of God.

“

Hands on with the Prophetic

Many people go through their Christian walk with the map in front of them but never actually exploring the fullness of the spiritual landscape God has given them. Rachel will be giving people a practical opportunity to unpack what prophecy is, how we receive the gift and how we can use it to enrich our walk in faith and communicate to people outside the church how much God loves them. Basically – spiritual super hero training!

”

Sunday Afternoon Seminars

Andy Eyre is the associate pastor at Norwich Central Baptist Church. Andy has a phenomenal story of sex, drugs and rock and roll followed by a powerful encounter with God that changed his whole life. He now leads worship, speaks and does outreach in the community with NCBC.

“

**Game of Thrones, Profanity, and Amazon:
where's the line?**

In a world that has a very different level of sensitisation to 50 years ago, how do we choose what is permissible and what is beneficial in what we watch, say and the way we spend our money? Andy explores what it means to be holy in the 21st Century.

”

WEEKEND RUN SHEET

Session Begins:	8	9	10	11	12	13	14	15	16	17	18	19	20	21	22	23
Friday 2nd Sept	Morning Worship in the Round House		Stephen Mawdliff – Power and Life after the Ascension						Jill Gower- Jesus in the Old Testament				Arrive	Evening Meeting With Worship – Jessica Regnart	Quiz Night and Bar Open	
Saturday 3rd Sept			Joey Graver – Owning our Faith						David Ward – Taking off the Mask	BBQ Available			Evening Meeting With Worship – Adam Jackson	Camp Fire and Bar Open		
Sunday 4th Sept	Morning Worship in the Round House		Phil Webb – Whats In a Word?							Evening Meeting With Worship – Colin Howell	Depart					
			Rachel Alexander – Hands on with the Prophetic							Andy Eyre – Game of Thrones, Prophanity and Amazon: where's the line?						

*– Seminars are subject to change (But hopefully not too much!)

- Evening sessions are in the barn
- Cafe is open in all Green areas unless otherwise stated.



Emerge Young Adults Weekend
2nd – 4th September 2016

Brandon House Farm