



Newsletter for Norfolk Fresh Expressions of Church



Jan-April 2014

Come and Be Blessed

Come and Be blessed is an Evening for Mission Pioneers We eat together, share stories, listen and pray, praise God, seek God's will.....

For all engaged in leading, starting or planning a Fresh Expression of Church

13th February 7- 9.15pm

At the Meeting Room, St Andrew's Church
Church Street, Holt. NR25 6BB.

Book your place and your food in advance by dining
Simon Fenn 07585 801450

Chips (S) £1.60 / (L) £2.20, Fish (S) £3.80 / (L) £4.55, Scampi £3.50,
Veggie Burger £2.05, Spring Roll £1.20



More Inside

**pages 2-4
Research on Fresh
Expressions**

**Page 5 Funding
Opportunity**

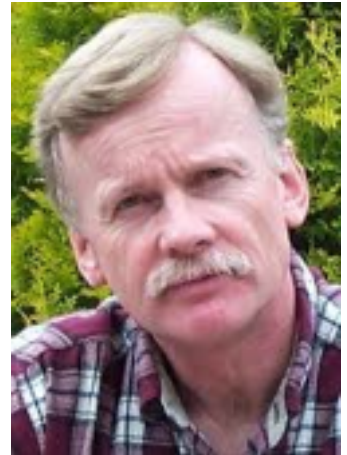
**Page 6
Meet the Team**

**New Rural
Evangelist, Jessie
Walrond**

The Fountain

fresh expressions in the CHURCH of England

Research
2014



Fresh expressions of church are having a major impact on growth in the Church of England – according to research released on 16th January 2014

The detailed study, involving all fresh expressions of church in 10 dioceses, was carried out by the Church Army's Research Unit for the Church Commissioners. Canon Dr George Lings, the Unit's Director, said, "Nothing else in the Church of England has this level of missional impact and the effect of adding further ecclesial communities."

Between January 2012 and October 2013, researchers spoke to the leaders of 518 fresh expressions in the dioceses of Liverpool, Canterbury, Leicester, Derby, Chelmsford, [Norwich](#), Ripon & Leeds, Blackburn, Bristol and Portsmouth. These dioceses were chosen to reflect variety in context, geographical spread and different stances towards fresh expressions.

The report comes as part of an 18-month research programme investigating factors related to church growth within the Church of England. Findings showed that, by 2012, four to five times as many fresh expressions were being started per year compared to 2004 -when the *Mission-shaped Church* report was launched. The growth has been noticeably marked in the past three years. Some 44% of the fresh expressions in the research were launched between 2010 and 2012. Across the 10 dioceses surveyed, this adds the equivalent of a whole new diocese in terms of numbers. Evidence suggests that for every one person involved in the setting up of a fresh expression of church, there are now two and half more people. A typical fresh expression begins with 3-12 people and grows to 250% of that initial team size.

Other headlines from the research in 10 dioceses shows:-

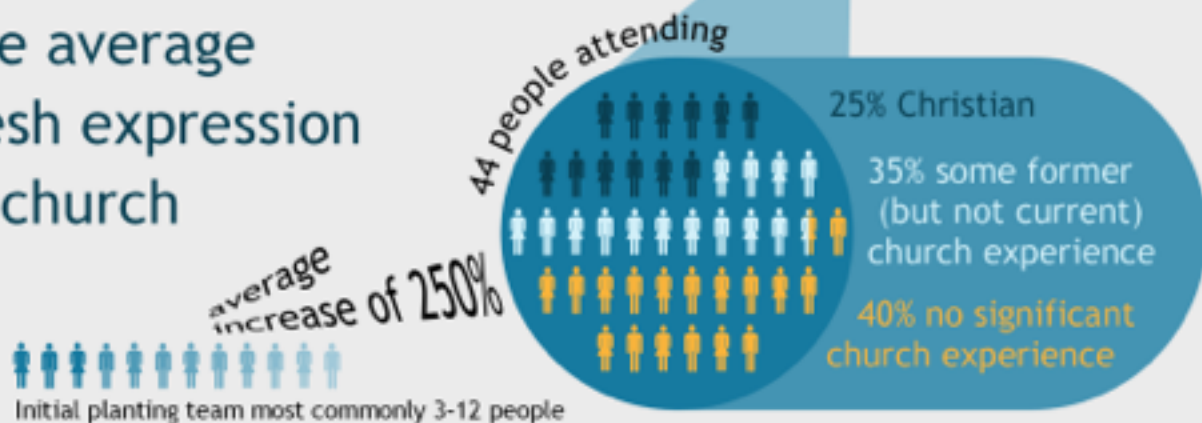
- an estimated 24.5% of those attending fresh expressions of church are already members of a church, 35.2% are people who used to belong to church but who left for one reason or another while 40.3% are those with no previous church background at all.
- the fresh expressions of church, on average, were found to make up 15% of the dioceses' churches and 10% of the attendance.
- 52% of the fresh expressions of church are led by people who are not ordained, 40% are led by people who are not formally authorised. Two out of three lay leaders are women, two out of three ordained leaders are men; but the men are more likely to be paid and the women working voluntarily.
- there are at least 20 different recognisable types of fresh expressions of church and the average size is 44.
- fresh expressions of church can be found in all traditions in the Church of England. The fresh expressions of church meet in all kinds of venues at various times, days of the week and geographical settings. The world of fresh expressions of church is described as one of 'varied and smaller communities'.
- 78% intentionally encourage discipleship, not just attract attenders. Over a third have communion services and a third have had baptisms. Half are taking some steps toward responsibility for their finances and two thirds for how they are led, very few have formal legal status within the Church of England

fresh expressions in the CHURCH of England

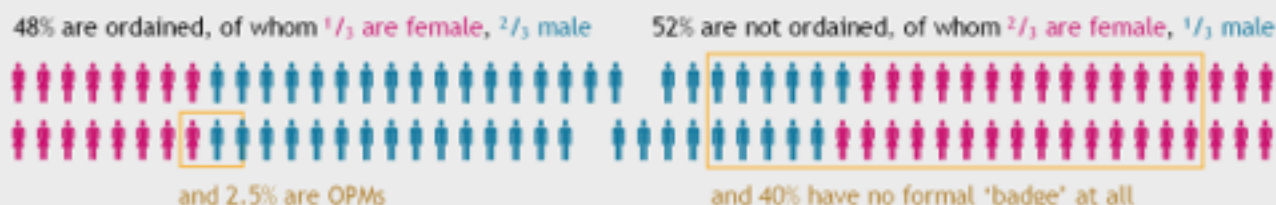
Research
2014



The average fresh expression of church



Leaders of fresh expressions of church



Fresh expressions have been started in a wide range of geographical and social contexts - and across all traditions of the Church of England. They meet at times and places relevant to the people they serve.

freshexpressions.org.uk/news/anglicanresearch

fresh
expressions

Statistics are based on interviews with leaders of fresh expressions of church in ten dioceses of the Church of England. Figures have been rounded to the nearest 0.5%. The full report can be found at the web address above.

fresh expressions in the CHURCH of England

Research
2014

Bishop Graham Cray, Archbishops' Missioner and leader of the Fresh Expressions team, said, "This thorough research shows the numerical scale, the demographic spread and the sheer variety of fresh expressions of church in the Church of England. Particularly significant is the proportion of people involved who have never been part of any church in their lifetime, and the number of new lay leaders who have never previously been involved. These findings offer hope, and show that the Church of England does know how to draw unchurched people into Christian discipleship and fellowship, and that decline is not inevitable."



Dr Rachel Jordan, National Mission and Evangelism Adviser for the Church of England, added, "This research has shown the true impact of fresh expressions of church in the Church of England. There are far more fresh expressions than we had ever imagined, creatively reaching all types of people with the love and message of Jesus Christ – people who were previously entirely missing from our churches. It demonstrates that the Church of England can adapt and flourish in the present and promises that we have a real future."



Canon Phil Potter, Director of Pioneer Ministry, Diocese of Liverpool, and team leader elect of Fresh Expressions, commented, "This is the most in-depth research we've had to date and it offers an encouraging and exciting snapshot of how the Church is finding fresh confidence in evangelism through fresh expressions. There is much here to both inspire and challenge, and this research will help to release many more creative and strategic conversations as we work together for a new future."



You can download the **full fresh expressions research report** at <http://www.freshexpressions.org.uk/news/anglicanresearch> or you can find the executive summary of the complete research, details of the research done in Norwich Diocese and other resources at <http://www.churcharmy.org.uk/fxresearch>



Support for Fresh Expressions & Outreach



The Cinnamon Network is trying to make it as easy as possible for the local church to help those people most at need in its community - more...

The Cinnamon Network helps local churches to:

1. Get Started

By understanding the needs of the community, the resources of the local church and how best to match the two.

2. Work Together

By encouraging local churches in an area to work together to deliver more community projects and to work in partnership with the local council and local police.

3. Choose A Project

By selecting a project from a menu of over twenty five recognised best practice church based community projects.

4. Access Funding

By applying for a £1,500-£2,000 Micro-Grant towards the costs of starting a Cinnamon Network recognised project.

For information and funding go here:

www.cinnamonnetwork.co.uk



it really works!

Church based community projects that The Cinnamon Network recognises as best practice include:

Who Let The Dads Out?
4Family
Safe Families for Children
TLO Early Intervention
Romance Academy
Job Club
Ignition
Living Recovery
Community Money Advice
CAP
Street Pastors
Street Angels
Caring for Ex-Offenders
Clean Sheet
Reflex
Night Shelter
Hope Into Action
Passing the Baton
MakeLunch
Food Bank
Food Stores
Christmas Lunch on Jesus
Mega Fitness
Link Visiting Scheme
Parish Nursing
Prospects

Designs by JAW/Justice on UK

We would love to share more news of how Fresh Expressions of Church are starting/developing and especially how they are helping individuals to discover Jesus for the first time and grow in following him. Stories will be shared with Network Norwich, denominational news publications and National Fresh Expressions. Send your story with a high resolution photo to sally@tasvalley.org

Support for Fresh Expressions & Outreach

Norfolk Fresh Expressions Team

We are a team of Christians who care passionately about people coming to faith in Jesus and who seek to

- pray and encourage prayer for Fresh Expressions
- support pioneers who are leading Fresh Expressions of Church
- lead the Mission Shaped Ministry Course
- identify areas not reached by current patterns of ministry as potential areas for Fresh Expressions/ Church planting
- foster vocations to pioneering mission.
- spread the news about how people discover Jesus

Contact any one of them for help and support in your Fresh Expression:

Louise Alder 01362 821953

David Bartlett 01263 833404

Simon Fenn (below) 07585 801450

Nigel Fox 01603 426657

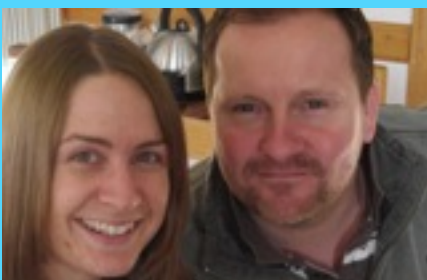
Sally Gaze 01508 470762

Peter Leech 01692 581944

John Hull 01362 695154

Katie Miller 01603 663338

David Ward 01362288329



Rural Evangelist Jessie Walrond

Hello, I'm Jessie, and I'm employed by the Fountain Network to work as a rural evangelist in Norfolk, based in Swainsthorpe! Last year, I studied Christian Apologetics at Oxford, which is basically answering some of the big questions of life, from a Christian perspective! Things like..Why should we trust the bible? Aren't all religions just the same? How could a loving God allow so much suffering?

If you've ever asked that type of question, or been asked them by someone else, you're not alone! Part of my work is helping Christians to respond to those types of questions. We have some great answers! If you are interested in having an evening event about 'answering difficult questions', or would like me to come and talk at your church/cell group, I'd be delighted to hear from you.

Another part of my job is helping churches to think creatively about how to do mission in their local communities, how they can serve their area, and how they can engage on a deeper level with those around them. If you want to serve your community but you're not quite sure how, or just want some fresh ideas and inspiration, and if you are passionate about being Jesus to your local community, then please contact me, I would love to be in touch.

You can contact me at: jessie@ruralministries.org.uk or leave a message on 01508 470762 & I will ring back. I look forward to hearing from you!



The Fountain Network

For many Fresh Expressions of Church sharing a vision, values and resources with other groups can be invaluable.

The Fountain is a regional network of churches and individuals (across streams and denominations) who work together for the purpose of mission. The members share mentoring, resource teams to help with mission events, training, teaching and encouragement.

To find out more contact Stephen Mawditt, The Fountain Network, The Well Christian Centre, Swaffham Road, Ashill, IP25 7BT

